



SAF-T-FENCE® MACHINE GUARDING



MADE IN THE USA

PROTECT YOUR WORKERS FROM HARMFUL ACCIDENTS AND COSTLY FINES

▶ **STRUCTURAL INTEGRITY**

Our framed welded mesh that bolts into our posts gives Saf-T-Fence® superior strength and stability.

▶ **MODULAR SYSTEM**

The Saf-T-Fence® system consists of standard panels available in a variety of widths and heights.

▶ **IN STOCK**

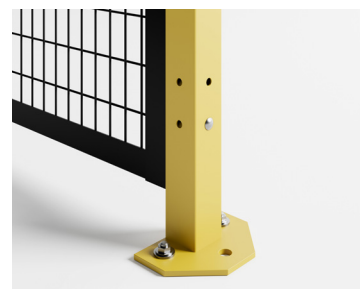
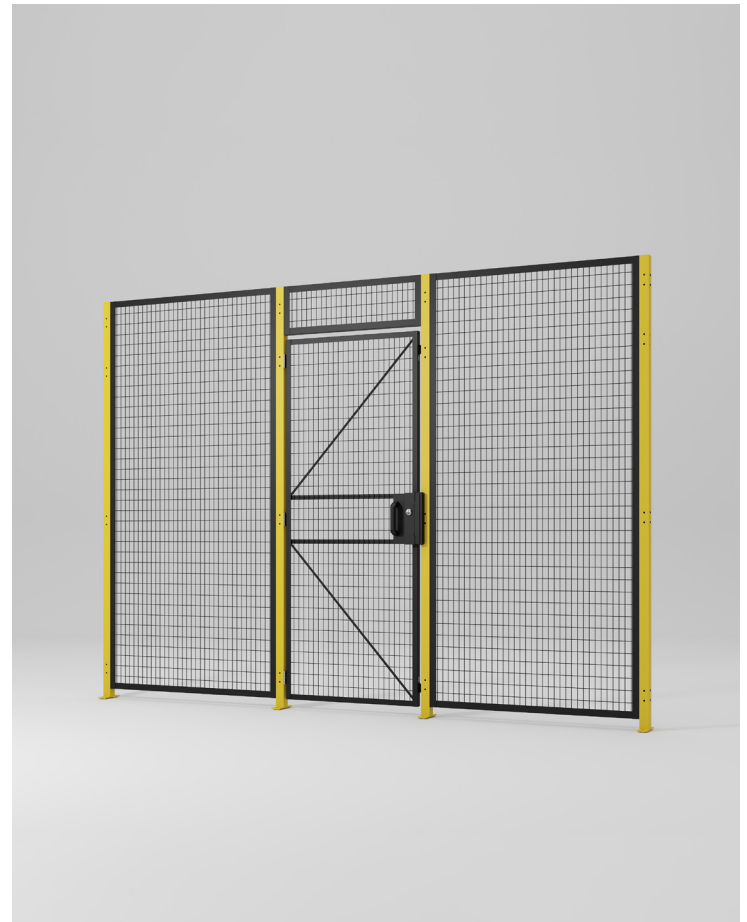
We keep a large stock of our standard components in-house to ensure quick shipping for your urgent safety needs.

▶ **MEETS OSHA & ISO SAFETY STANDARDS**

The Saf-T-Fence® system meets all relevant ISO, OSHA, ANSI/RIA and CSA safety standards.

Maintaining the safety of your employees around machinery is paramount to the success of your business. Saf-T-Fence® Machine Guarding from Folding Guard not only protects your staff, but it can also help lower your cost of doing business by maintaining productivity and reducing downtime.

Our modular system consists of three system heights, multiple styles of doors and over 30 pre-fabricated wire mesh panel sizes. All pieces assemble and install precisely and easily. You'll enjoy worker safety, less downtime and compliance with federal safety regulations when you use Saf-T-Fence® to fulfill all of your machine guarding needs.



The sturdy 4"x6" footplate makes the system extremely stable.



The angle panel kit can join two panels at any angle.



SAF-T-FENCE® MACHINE GUARDING



STANDARD OFFERING

	Width	58" High	82" High	94" High
Posts				
	2"	PS063Y16A5	PS084Y16A5	PS096Y16A5
Panels				
	10"	SAF-1058	SAF-1082	SAF-1094
	16"	SAF-1658	SAF-1682	SAF-1694
	19"	SAF-1958	SAF-1982	SAF-1994
	22"	SAF-2258	SAF-2282	SAF-2294
	28"	SAF-2858	SAF-2882	SAF-2894
	34"	SAF-3458	SAF-3482	SAF-3494
	46"	SAF-4658	SAF-4682	SAF-4694
	58"	SAF-5858	SAF-5882	SAF-5894
	70"	SAF-7058	-	-
	94"	SAF-9458	-	-
Door Type				
Single Hinged	34"	HS034058A1	HS034082A1	HS034094A1
	46"	HS046058A1	HS046082A1	HS046094A1
	58"	-	HS058082A1	-
Pair Hinged	70"	HP070058A1	HP070082A1	HP070094A1
	94"	HP094058A1	HP094082A1	HP094094A1
Single Slide	34"	-	SS034082A1	-
	46"	-	SS046082A1	SS046094A1
	58"	-	SS058082A1	SS058094A1
	70"	-	SS070082A1	SS070094A1
	94"	-	-	SS094094A1
Slide Pair	70"	-	SP070082A1	-
	94"	-	SP094082A1	SP094094A1
Clear Access Single Slide	70"	CS070058A1	CS070082A1	-
Clear Access Slide Pair	94"	-	CP094082A1	-
	142"	-	CP142082A1	-

DOOR OPTIONS - TRACK & HEADER

Door Type	Width	Header Bar	Transom	Track
Single Hinged	34"	K-HB034011	K-TP034111	-
	46"	K-HB046011	K-TP046111	-
	58"	K-HB058011	K-TP058111	-
Pair Hinged	70"	K-HB070011	K-TP070111	-
	94"	K-HB094011	K-TP094111	-
Single Slide	34"	-	K-TP034111	K-SS034TSP
	46"	-	K-TP046111	K-SS046TSP
	58"	-	K-TP058111	K-SS058TSP
	70"	-	K-TP070111	K-SS070TSP
Slide Pair	70"	-	K-TP070111	K-SS094TSP
	94"	-	K-TP094111	K-SS094TSP
Clear Access Single Slide	70"	-	-	K-CS070TLP
Clear Access Slide Pair	94"	-	-	K-CP094TLP
	142"	-	-	K-CP142TLP

LOCKSET OPTIONS

Door Type	Snap Lock	Pad Lock	Cylinder	Keypad	Electric Strike
Single Hinged	K-HSSLUNP	K-HSPLUNP	K-HSKDOR1	K-HST1OR1	K-HSESOR1
Pair Hinged	K-HPSLUNP	K-HPPLUNP	K-HPKDOR1	-	*K-HPESOR1
Single Slide	K-SSSLUN1	K-SSPLUN1	K-SSKDSR1	K-SST4SR1	-
Slide Pair	K-SPSLUN1	K-SPPLUN1	K-SPKDSR1	-	-
Clear Access Single Slide	K-CSSLUN1	K-CSPLUN1	K-CSKDSR1	K-CST4SR1	-
Clear Access Slide Pair	K-CPSLUN1	K-CPPLUN1	K-CPKDSR1	-	-

Lock right and universal options shown above. More options available, consult sales.

SPECIFICATIONS

Panels / Doors	
Frame	14-gauge 1 1/4" x 1 1/4"
Wire	10-gauge welded
Grid Opening	1 1/4" x 2 1/2"
Posts	
Tube	2" x 2", 16-gauge
Foot Plate	4" x 6" x 1/4"
General	
Panels Finish	Powder Coated Black
Posts Finish	Powder Coated Yellow
Warranty	1 Year



Multiple lock options available
(Snap Lock shown)

OTHER LOCK OPTIONS

Door Type	SH	HP	SS	SP	CS	CP
Keyed Alike Cylinders	✓	✓	✓	✓	✓	✓
Keyed Different Cylinders	✓	✓	✓	✓	✓	✓
Cylinder to Accept Interchangeable Core	✓	✓	✓	✓	✓	✓
Thumbturn	✓	✓	✓	✓	✓	✓
Hydraulic Closer	✓	✓				
Pushbar Exit Device	✓	✓				
Deadlatch Paddle	✓	✓				
Lever Handle	✓	✓				
Magnetic Lock			✓	✓	✓	✓
Proximity Card Reader	✓	✓	✓	✓	✓	✓
Exit Button	✓	✓	✓	✓	✓	✓

SH Single Hinge | HP Pair Hinge | SS Single Slide | SP Slide Pair
CS Clear Access Single slide | CP Clear Access Slide Pair