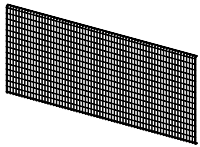




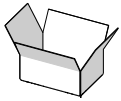
## Qwik-Fence® Back Panels For Pallet Rack Backing

### Installation Instructions

#### PARTS LIST:

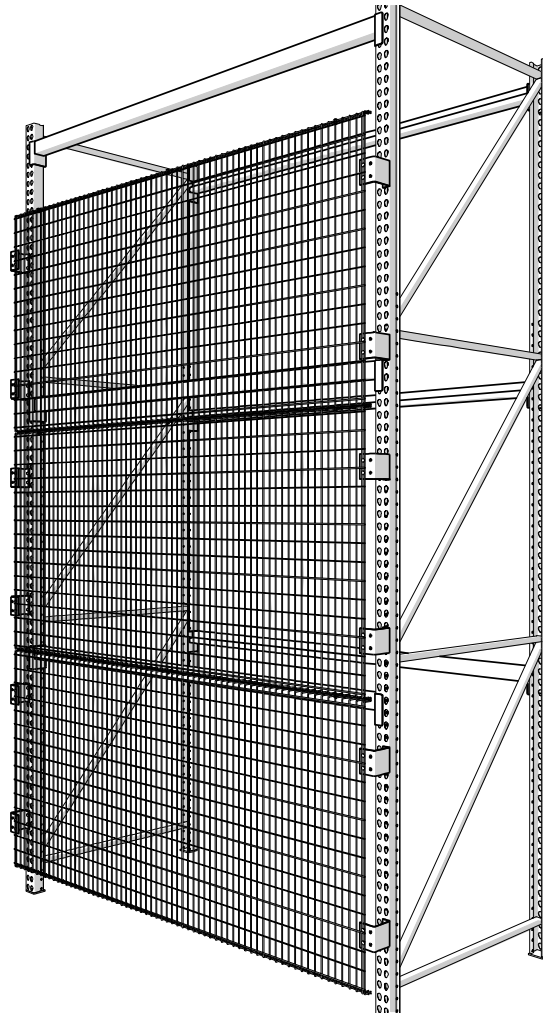


QWIK-FENCE BACK PANEL  
FOR PALLET RACK  
(SIZE AND QTY. VARY)

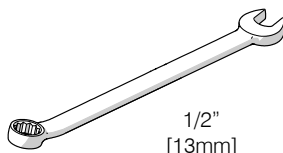


HARDWARE KIT  
(FOR QWIK-FENCE BACK PANEL FOR  
PALLET RACK INSTALLATION)

x 1

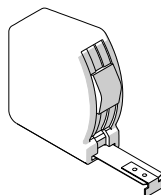


#### TOOLS REQUIRED:

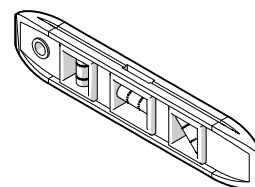


1/2"  
[13mm]

OPEN END WRENCH

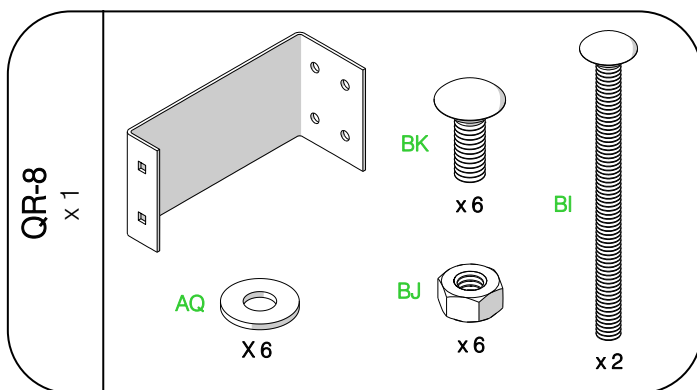
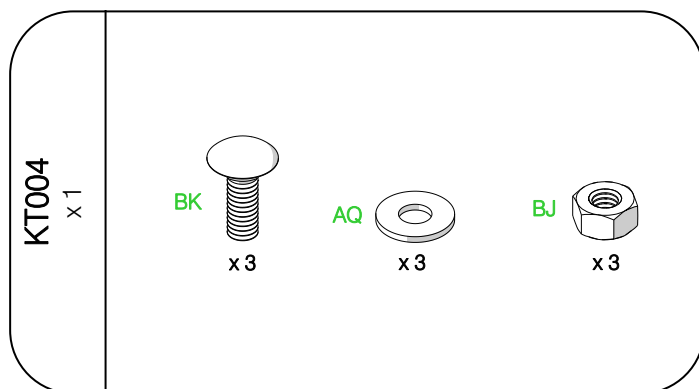
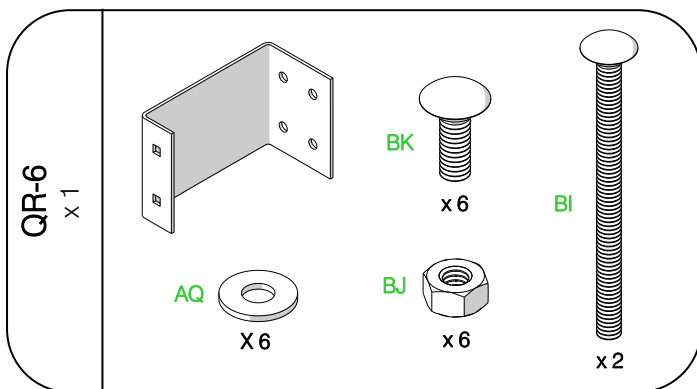
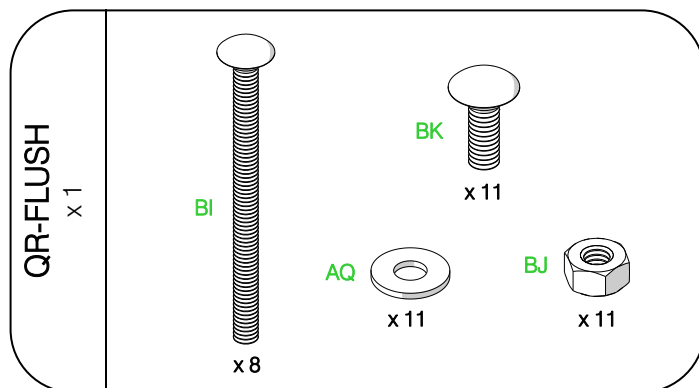
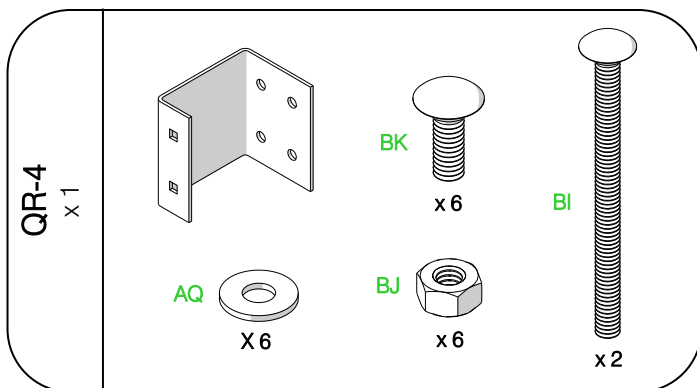


MEASURING TAPE



LEVEL

## HARDWARE PROVIDED: QR-FLUSH, QR-4, QR-6, & QR-8



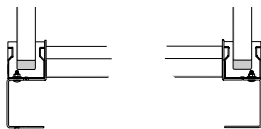
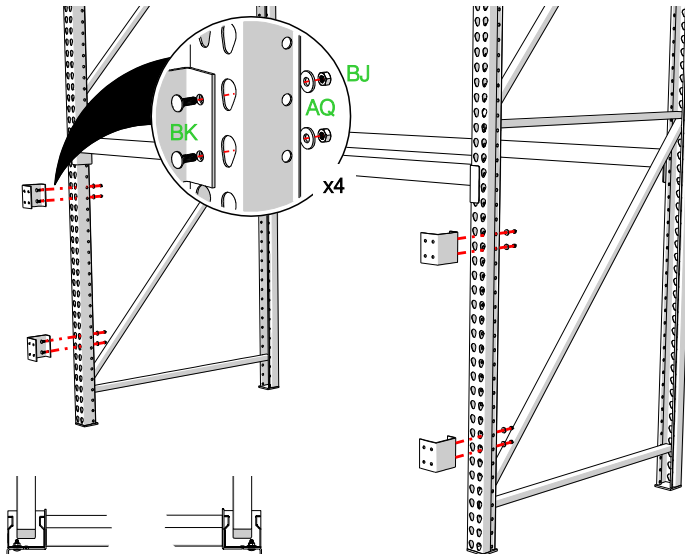
**NOTE:** IF INSTALLING ON CLOSED 3" UPRIGHTS, REPLACE HARDWARE SHOWN ON STEP 1 WITH 3-1/2" LONG CARRIAGE BOLTS (BI) PROVIDED IN ABOVE KITS

## HARDWARE LIST:

- (BI) 5/16"-18 x 3-1/2" SQUARE NECK CARRIAGE BOLT
- (AQ) 5/16" FLAT WASHER
- (BJ) 5/16"-18 FLANGE NUT
- (BK) 5/16"-18 x 3/4" SQUARE NECK CARRIAGE BOLT

# OFFSET BRACKET

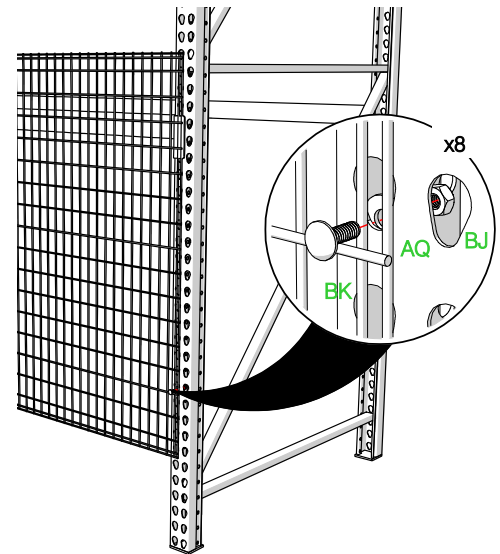
1



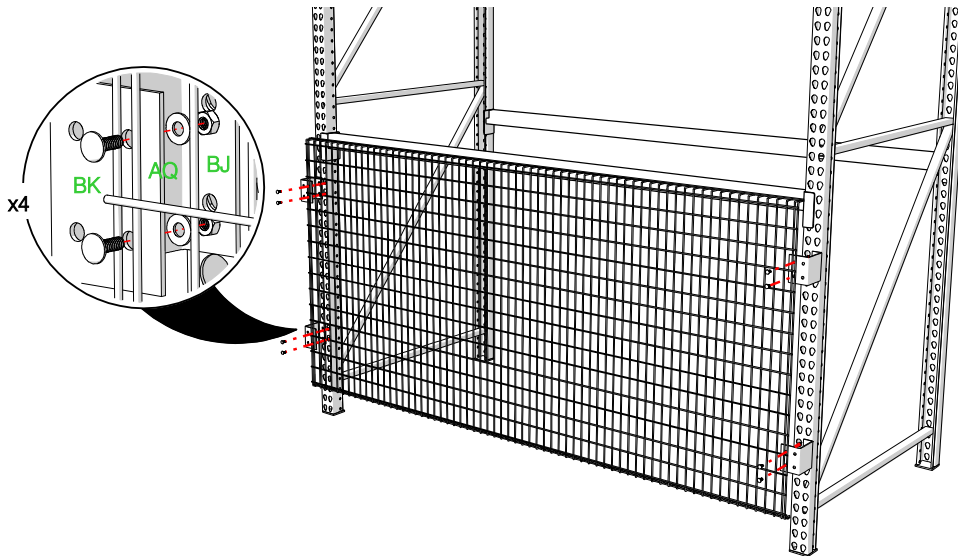
TOP VIEW

NOTE:  
INSTALL MOUNTING BRACKETS FLUSH TO  
THE OUTSIDE OF RACK UPRIGHTS

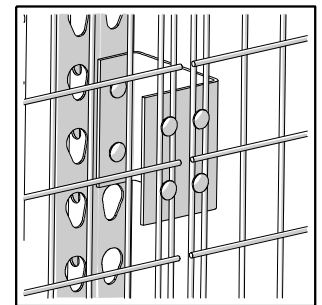
# FLUSH / NO BRACKET



2

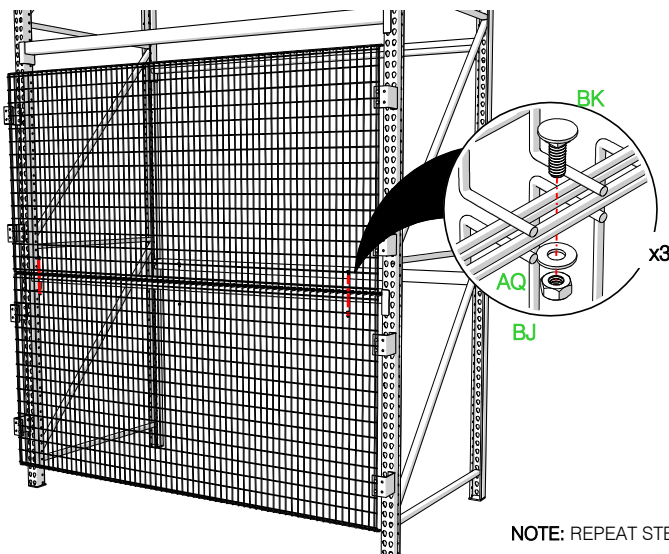


# MULTIPLE BAYS

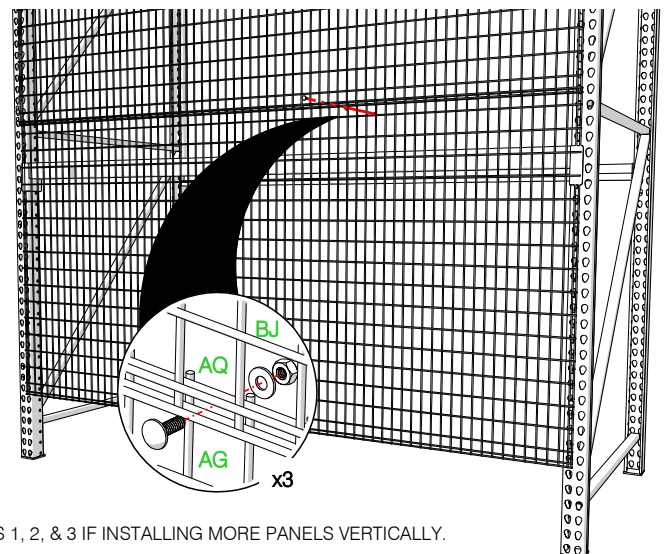


# OFFSET BRACKET

3



# FLUSH / NO BRACKET



NOTE: REPEAT STEPS 1, 2, & 3 IF INSTALLING MORE PANELS VERTICALLY.